

Extractor set 9087

Content

Following pullers can be assembled:

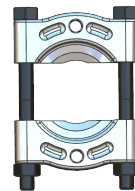


1010 160x155mm



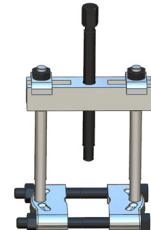
1110 190x195 mm

+

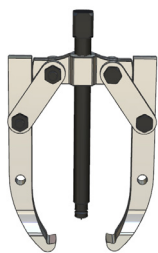


1204B 110x110mm

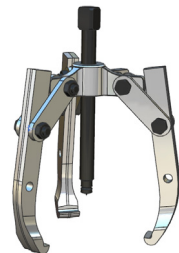
=



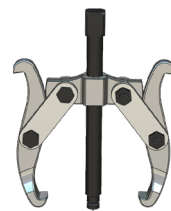
1110-1204B



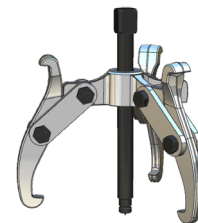
1307L 225x240mm



1307LT 225x240mm



1407 125x200mm

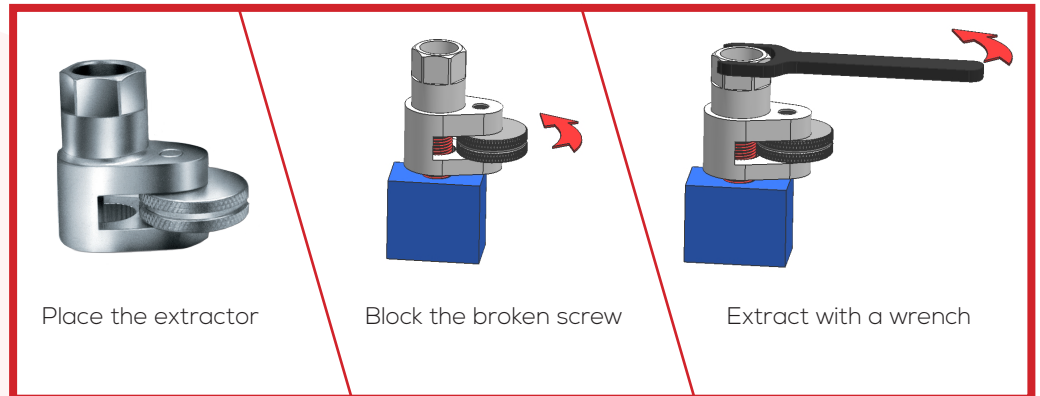


1404T 125x200mm



2301-2302

2301 and 2302 stud extractor

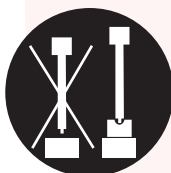


Place the extractor

Block the broken screw

Extract with a wrench

Instructions



- 1- Make sure the spindle is cleaned and greased before use.
- 2- Make sure the axe has a centre hole. If not use a point protector.
- 3- Make sure the jaws are evenly spread.
- 4- Apply pulling force by turning the spindle. Never hit the spindle and not use power impact wrench.
- 5- Do not keep the spindle too sticking out from the puller's body.
- 6- Always wear suitable personal protective equipment.

DO NOT USE POWER TOOLS